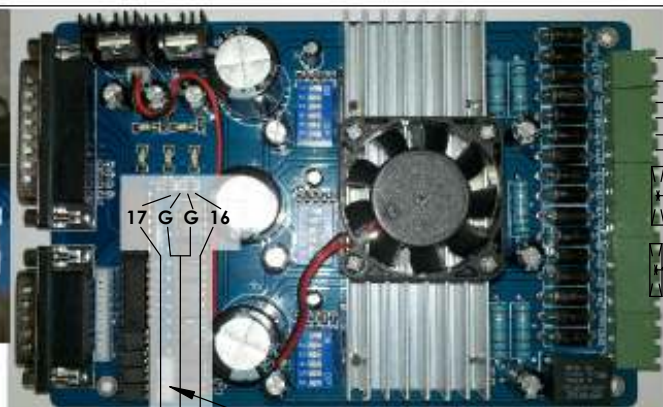
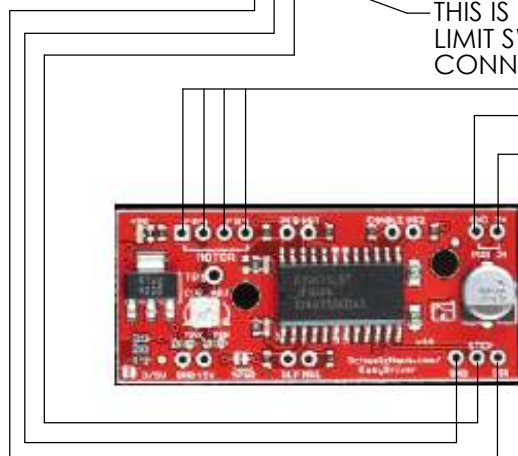


pin 16 = step
pin 17 = direction



THIS IS WHERE E-STOP AND
LIMIT SWITCH(OPTIONAL)
CONNECT



easy driver
stepper
controller

+12VDC

5VDC RED - NOT USED

GROUND BLACK

12VDC YELLOW

Power
Supply

black
green

jumper these on 20
pin connector so
that power supply
stays ON



Replace
resistor R5
with 10k to
18k ohm for
higher
temperature
control

+12VDC

GROUND

GREEN

BLACK

BLUE

RED

REPEAT WIRING
FOR Y AND Z

no connection



Stepper Motors

X

Y

Z

Extruder

Heating
Resistors

Thermistor

PROJECT:

SeeMeCNC H-1

TITLE:

H-1
Basic Electrical
Schematic

SIZE
A

DWG. NO.

25925

REV

1.2

©2012 SeeMeCNC™

NOTES: CONNECTION =

5

4

3

2

1

D

C

B

A